

TOGETHER NETWORK⁺

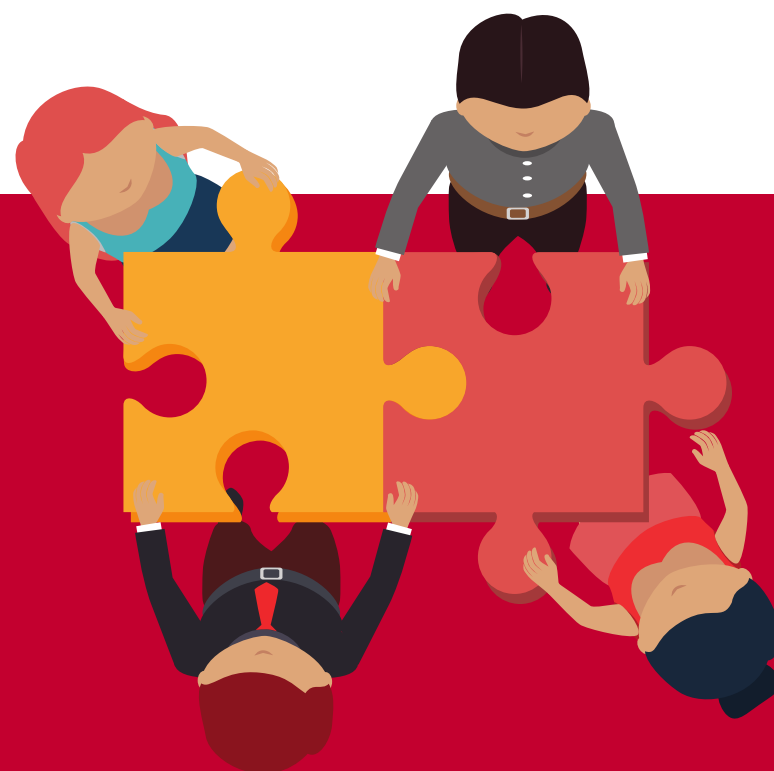
Q1 2019



340

Projects supported

69% involve a Church



48

Projects delivered

directly by JVs



130

Events contributed to

as organiser, speaker, trainer, facilitator or exhibitor



291

Churches supported

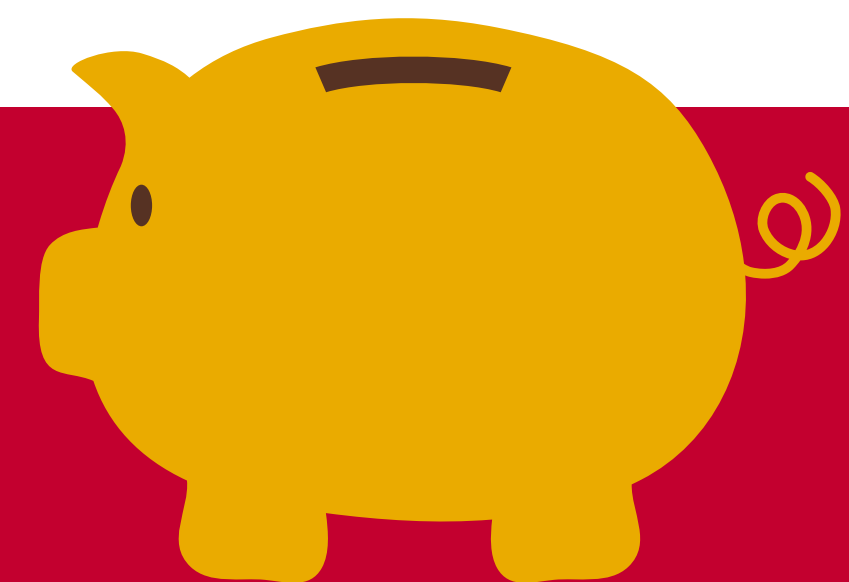
over 10+ denominations



47,708

People reached

includes volunteers, participants and beneficiaries



£157,576

Funding secured

for other organisations





291

Total number of churches the Together Network supported directly with social action activities

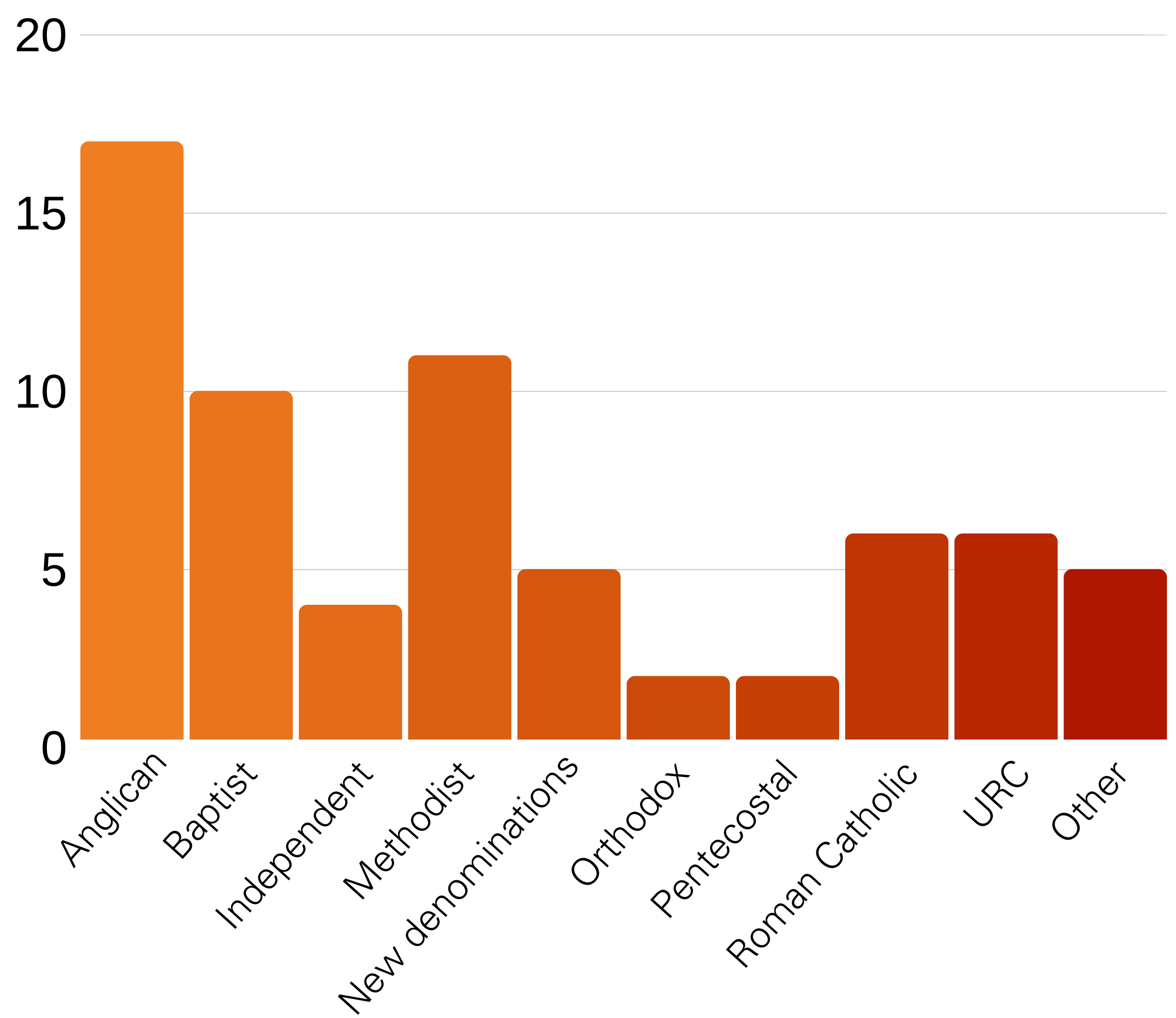
10+

different denominations supported by JVs this quarter

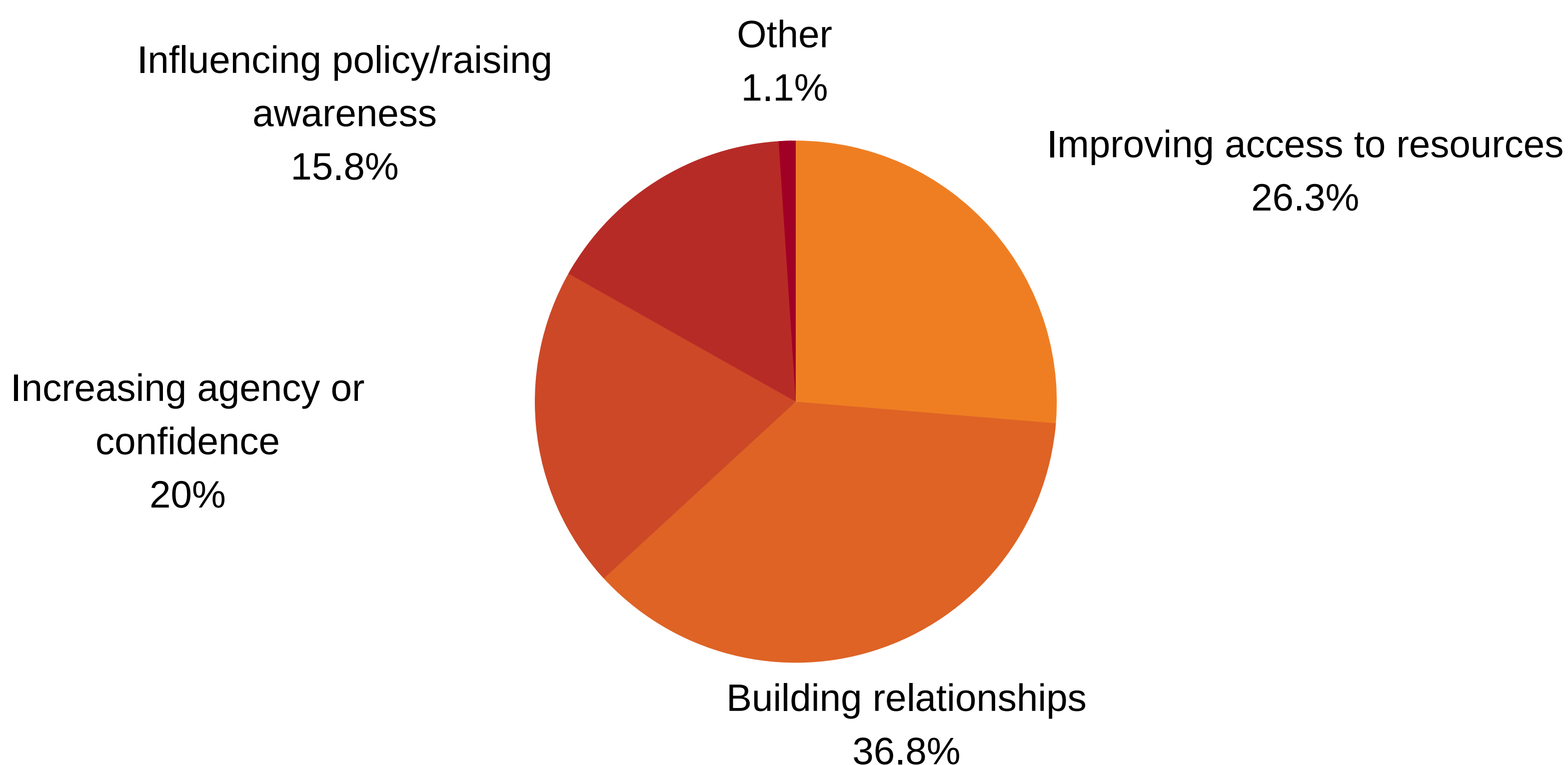
Saints

Together For Change identified Nuneaton as a town with areas of intense deprivation, and whilst churches were holding weekly prayer meetings to seek a way forward, they lacked the resources and capacity to make a significant difference. TFC felt drawn to a near empty building, sensing that this could become a hub for church social led-action. TFC formed a steering group of nine ecumenical churches and presented the concept to church leaders, who saw this as the answer to their prayers. TFC was asked to manage the development of the project. They met with the owner of the building, who bought into the vision and offered a lease on very favourable terms. Now known as 'Saints' an initial 12-18 month pilot will focus on the ground floor of the building and will combine enterprises (a café with soft play area, IT resources etc.), sport (e.g. dancing and cycling clubs), and connecting activities (creative arts and a youth band).

Number of JVs supporting churches that are:



Purpose of Projects Delivered:



48

Projects delivered

65% more than in Q1 of last year

3,749

Number of beneficiaries of projects delivered by the Together Network (estimate)



340

Projects supported
20% more than in Q1 of last year

234

Number of projects involving
a church - 69%

Total number of people
expected to benefit from
projects supported (estimate)

32,349

4,068

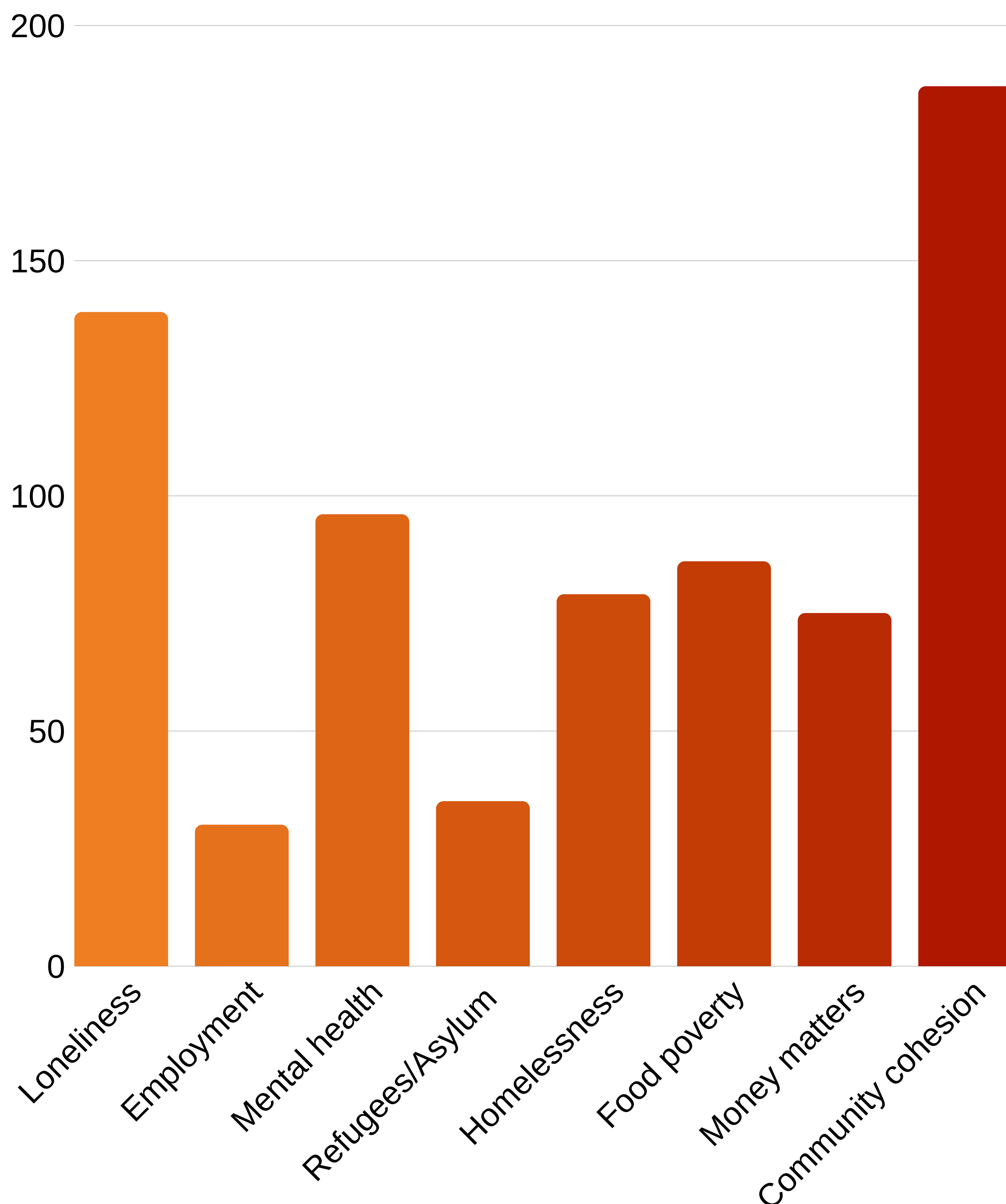
Total number of volunteers
involved in projects
supported (estimate)

Creating Connections

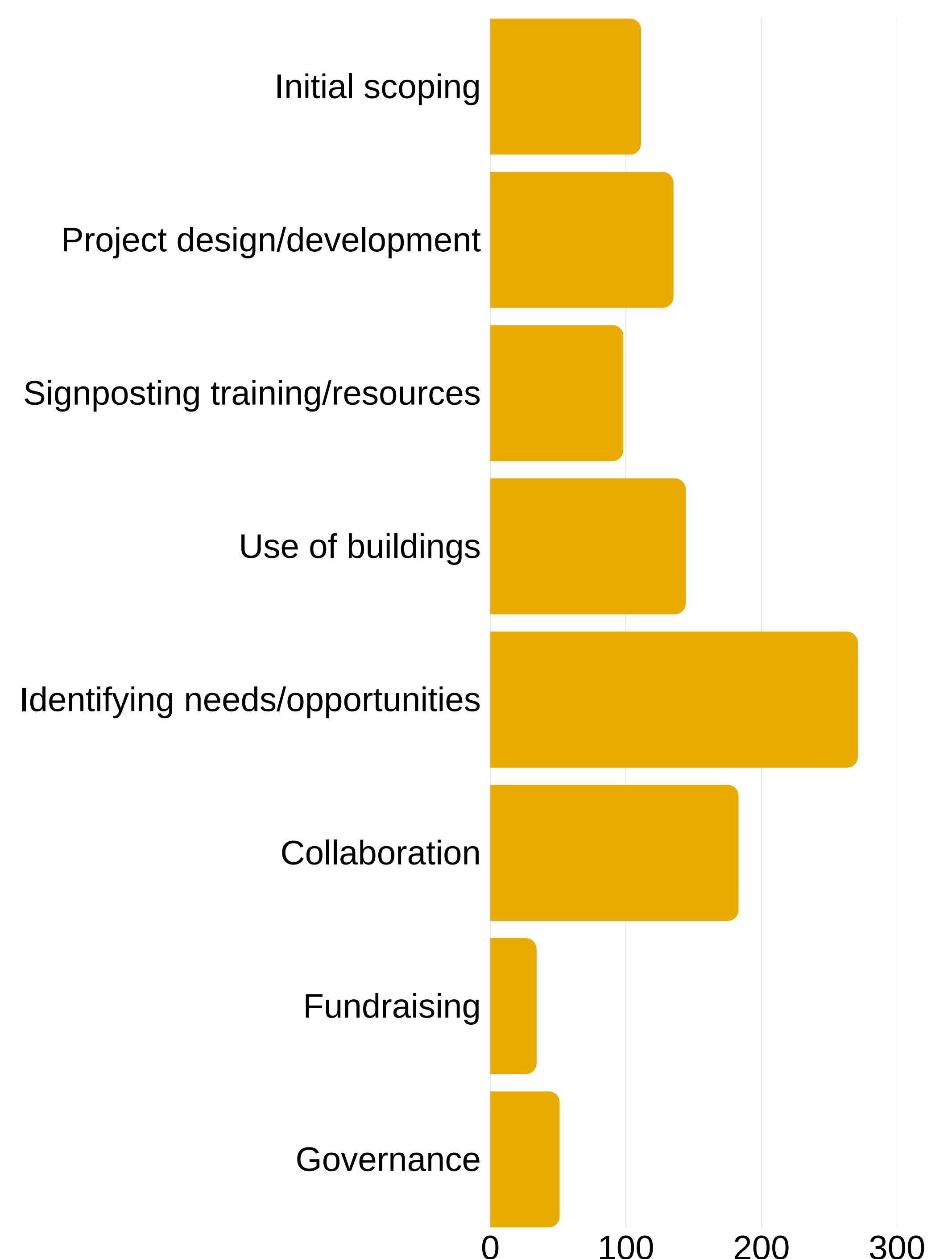
Communities Together Durham has seen local churches grow their ministry around providing food, fun and friendship during the school holidays. They wanted to create opportunities for these churches to share good practice and see what else may be available to them to grow or add value to their work.

CTD organised a marketplace-style event where funders, activity providers, tourist destinations, safeguarding advisers and diocesan support staff were all available to have one to one conversations with clergy and laity from across the diocese. It was an informal space for people to use for conversation and fact-finding, recognising that those who were doing the work had things to share with one another, and funders and tourist destinations were able to meet them to detail their offer, and hear about the work that was going on. The event was created such that it was relevant for different groups with a variety of experiences, expectations, needs and plans.

Number of projects supported by the Together Network that respond to:



Projects that received the following kinds of support from the JV:





£157,576

Total funding JVs supported other organisations to secure for community or social action projects

Average amount secured (per successful application)

£13,131

63%

Success rate

A Race Against Time

Imagine Norfolk Together has been involved with The King's Lynn Winter Night Shelter since its conception. Taking the project forward from last year's pilot was a step of faith, with just four months to get everything in place, including finding a venue, staff, volunteers and finances.

INT consulted with the borough council and secured their support, which included a grant of £25,000. They also approached a local day centre for the homeless and secured a rental agreement for the building they were vacating, as well as advertising for a coordinator and submitting grant applications to secure the required funds.

All was put in place in time for the Shelter to open, and the borough council housing department have said that they were very impressed with the project, especially the quality of staff, the 130 volunteers, and the arrangement of the venue. The clients (known as guests) have spoken of the difference the project has made to their lives, with such comments as "I don't know how I would have survived the winter without you."

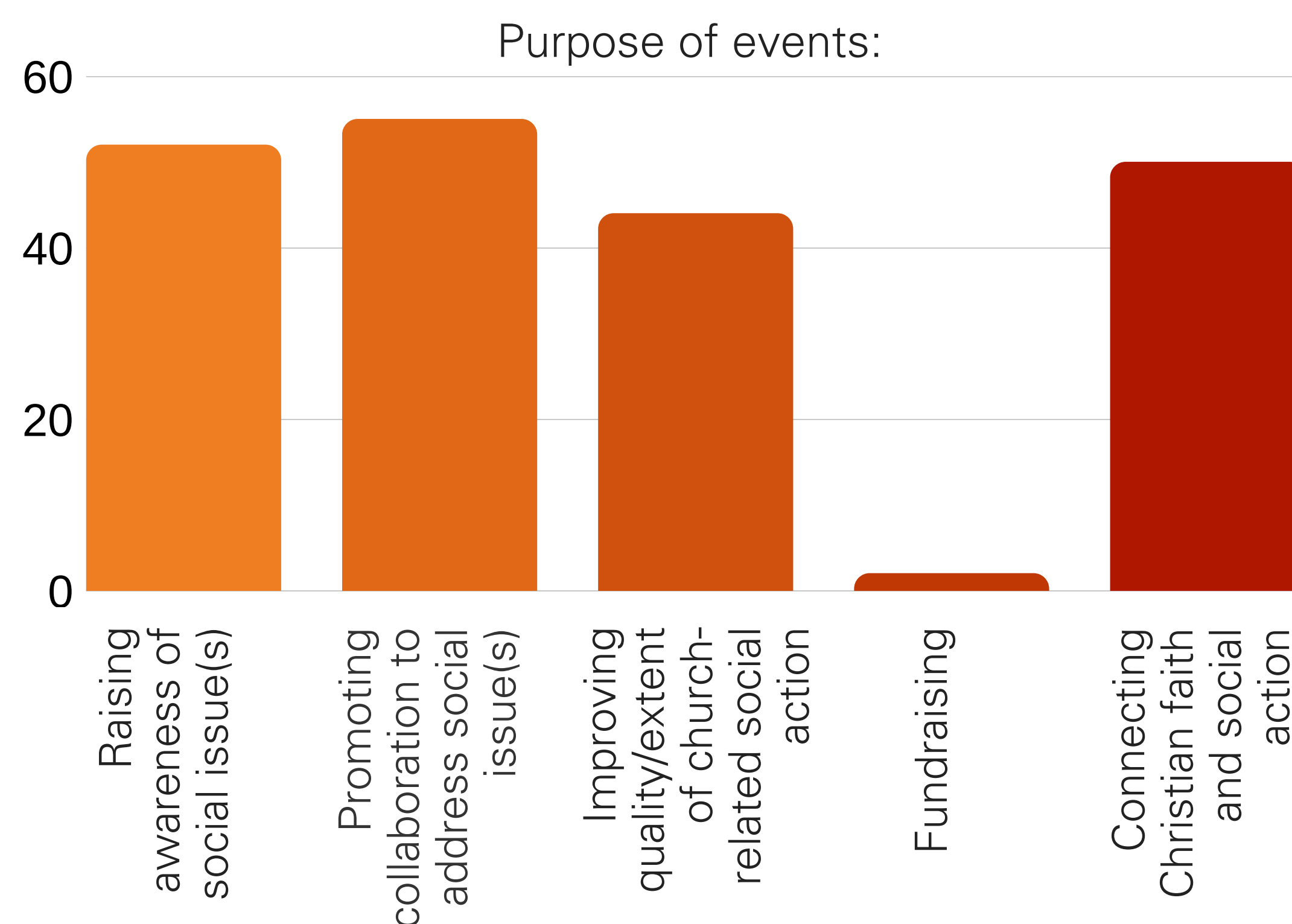


130

Events contributed to 83% more than in Q1 of last year

Total participants in events

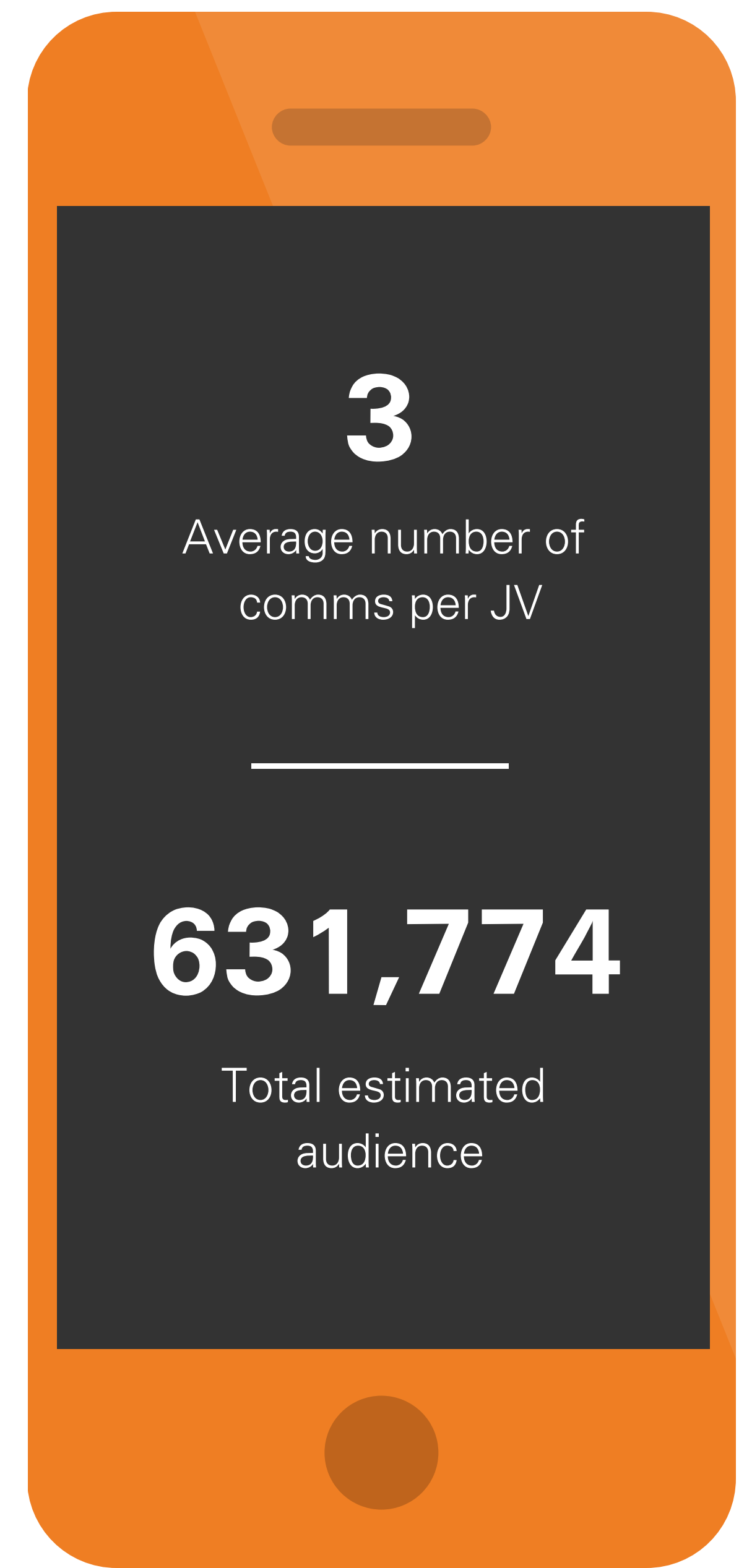
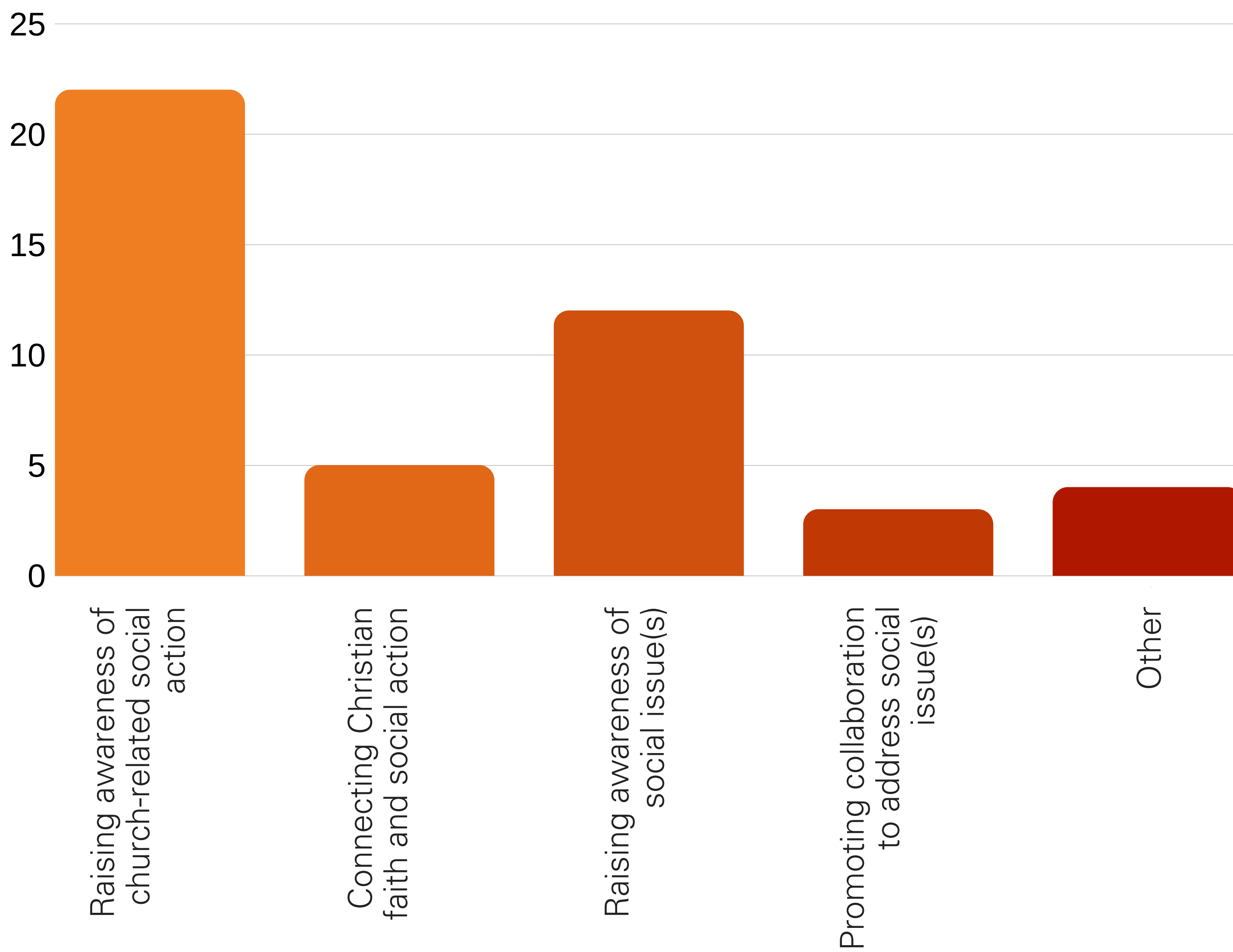
7,282



Re:Dress

As part of the Re:Dress project in the Diocese, Transforming Communities Together turned a church in Wolverhampton into a catwalk to raise awareness about fast fashion and its slavery and environmental impacts. TCT is a core member of the project, and was part of the organising group for this event. 80 people attended the event which involved a fashion show, where people modelled clothes from local charity shops, a market-place with local businesses, a clothes swap, spoken word, short talks and prayer stations. Attendees said that the event was enjoyable, insightful and informative, and another local church has already replicated the fashion show idea. TCT is now working a pack for churches to download to run their own event.

Number of communication activities whose main purpose was:



22

Number of influencing activities reported

Number of JVs reporting influencing activities

12

Social Prescribing

Greater Manchester Together supported a church to open a Place of Welcome back in the summer of last year after they were looking for a way to better connect with their local community and help with the increasing problem of loneliness. GTM have more recently been encouraging links between the church and other organisations and services in the local area, including schools, doctor's surgeries and existing groups. They also made connections with local sheltered accommodation, care homes and services that support adults with disabilities. With their health partners they have been seeing the Place of Welcome utilised as part of their social prescribing offers and the Local Authority is now interested in exploring social prescribing further.

Mr B recently lost his mum, who he had lived with all his life, and was struggling to cope emotionally and practically. A local health practitioner recommended Mr B try the Place of Welcome and he has been coming regularly ever since. Some of the volunteers at the Place of Welcome discovered that Mr B was struggling at home because he didn't know how to cook and so he now comes along to a monthly lunch club and is learning how to cook for himself.